

TMX AT03

SAW Filter datasheet

3.8 x 3.8 x 1.2 mm, SMD

Table of Contents

Features	1
Maximum Ratings	1
Frequency and Electrical Characteristics (Reference temperature @ 25°C)	1
Model Outline, Pin Connection and Marking	2
Test Circuit	2
Packaging	3
Frequency Characteristics	3

TMX AT03

SAW Bandpass Filters | DVB-C - RF

Features

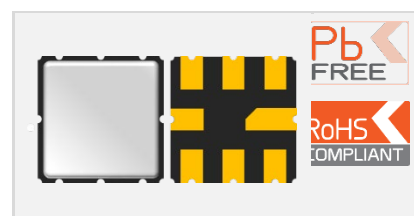
Features

- 1090 MHz center frequency
- Ceramic package for Surface Mounted Technology
- RF SAW Filter DVB – C
- 12 MHz useable Passband
- 50 Ω Balance Configuration

Applications

- Digital Video Broadcasting

3.8 x 3.8 x 1.2 mm



Maximum Ratings

Parameter	Min.	Typ.	Max.	Unit
Storage temperature range (T_{stg})	-40		85	$^{\circ}\text{C}$
Operating temperature range (T_A)	-40		85	$^{\circ}\text{C}$
DC Voltage (V_{DC})			0	V
Input Power			10	dBm

Frequency and Electrical Characteristics (Reference temperature @ 25 $^{\circ}\text{C}$)

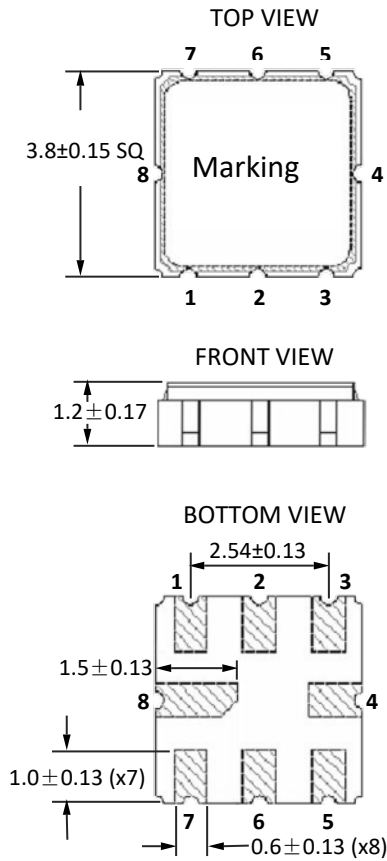
Parameter	Min.	Typ. ¹	Max.	Unit
Source impedance (balance)		50		Ω
Load impedance (balance)		50		Ω
Center frequency (f_c)		1090		MHz
Bandwidth (BW, passband width)	12.00			MHz
Absolute Attenuation				dB
From 500 to 944 MHz	45	50		
From 944 to 1051 MHz	40	47		
From 1051 to 1061 MHz	30	40		
From 1170 to 2000 MHz	40	45		
Insertion Loss (IL, 1084 – 1096 MHz)		3.9	5.2	dB
Amplitude Ripple (1084 – 1096 MHz)		0.6	1.5	dB

TMX AT03

SAW Bandpass Filters | DVB-C - RF



Model Outline, Pin Connection and Marking



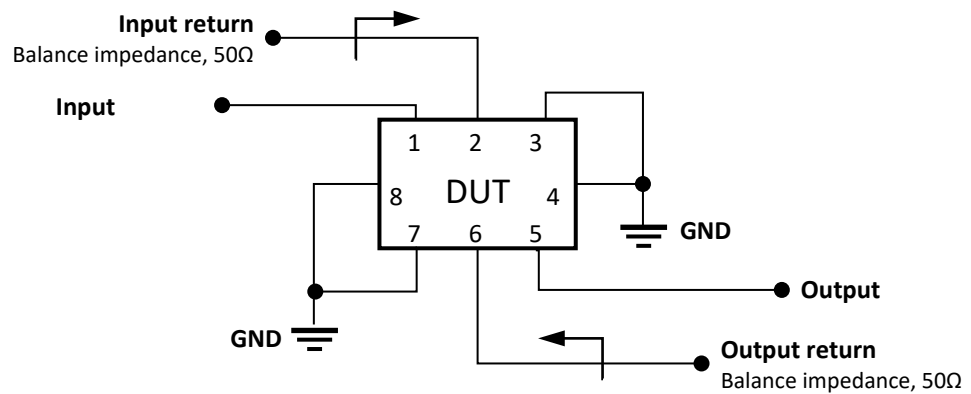
Marking		Note
Line 1	NNNN	Reference to RakonXpress part number with only the last 4 digits
Line 2	RYWWZZ	R = Partner identifier Y = Last digit of the year WW = Number of week in the year ZZ = Lot number in the week (from AA to ZZ)
Line 3	•	• = Identify black dot

Pin	Connections
1	Input
2	Input Return
5	Output
6	Output Return
3, 4, 7, 8	To be ground

Unit: mm

Test Circuit

50 Ω / 50 Ω Configuration



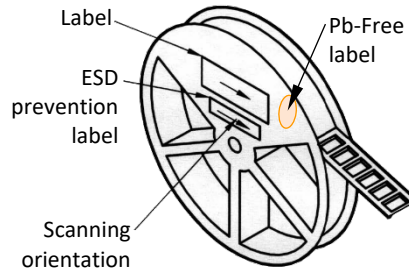
TMX AT03

SAW Bandpass Filters | DVB-C - RF



Packaging

REEL DETAILS:



Frequency Characteristics

