

# FTF4883

## Monolithic Crystal Filter

Part number: 4883 | Revision: W2 | Date: 22 January 2023



### 1.0 Main parameters

N°	Characteristics	Symbol	Value	Unit	Note
1.1	Nominal centre frequency	fc	25.000	MHz	fundamental mode
1.2	Number of poles		10		

### 2.0 Insertion loss

N°	Characteristics	Symbol	Min.	Nom.	Max.	Unit	Note
2.1	Insertion Loss	IL			6.0	dB	

### 3.0 Passband

N°	Characteristics	Symbol	Nom.	Unit	-Δ F <sub>min</sub>	+Δ F <sub>max</sub>	Unit	Note
3.1	Bandwidth between 3dB frequencies		3	dB	-3.5	+3.5	kHz	

### 4.0 Ripple over

N°	Characteristics	Symbol	Nom.	Unit	-Δ F <sub>min</sub>	+Δ F <sub>max</sub>	Unit	Note
4.1	Ripple over		≤2.0	dB	-2.8	+2.8	kHz	Referred to f <sub>c</sub>

### 5.0 Stopband

N°	Characteristics	Symbol	Nom.	Unit	-Δ F <sub>min</sub>	+Δ F <sub>max</sub>	Unit	Note
5.1	StopBand 1		≥40	dB	-6.5	+6.5	kHz	Referred to f <sub>c</sub>
5.2	StopBand 2		≥70	dB	-8.3	+8.3	kHz	Referred to f <sub>c</sub> /except spurious
5.3	StopBand 3		≥80	dB	-12.5	+910	kHz	Referred to f <sub>c</sub>

### 6.0 Matching

N°	Characteristics	Symbol	Resistance	Unit	Capacitance	Unit	Note
6.1	Input and output		3500	Ω	2.0	pF	

### 7.0 Temperature range

N°	Characteristics	Symbol	Min.	Nom.	Max.	Unit	Note
7.1	Operating	OTR	-55		70	°C	
7.2	Storage	STR	-55		85	°C	

### 8.0 Package and marking

N°	Characteristics	Specifications	Model outline drawing
8.1	Package type	KF13 (25.1 x 14.1 mm)	
8.2	Package height	10.0 mm max	
8.3	Pin length	4.0 mm min.	
8.4	Marking	Line 1: RAKON YYWW Line 2: FTF4883/25.0MHz	

# FTF4883

Monolithic Crystal Filter

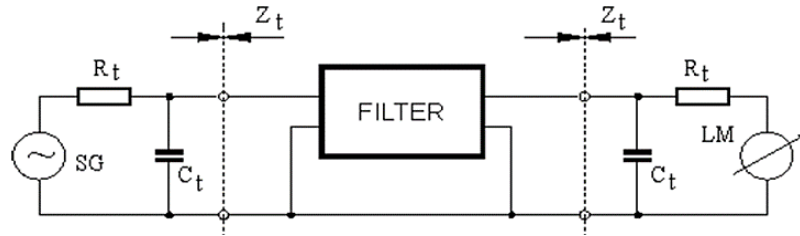


Part number: 4883 | Revision: W2 | Date: 22 January 2023

## 9.0 Test circuit

N°	Test circuit diagram
----	----------------------

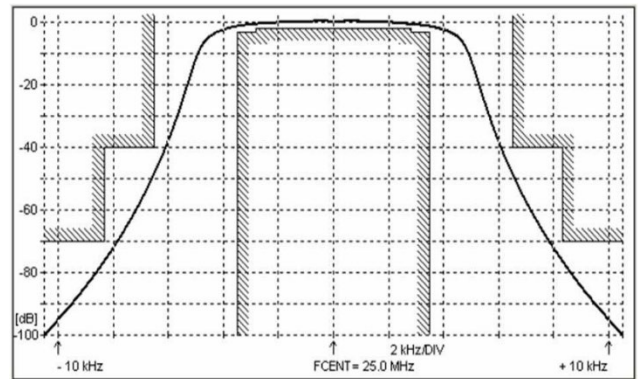
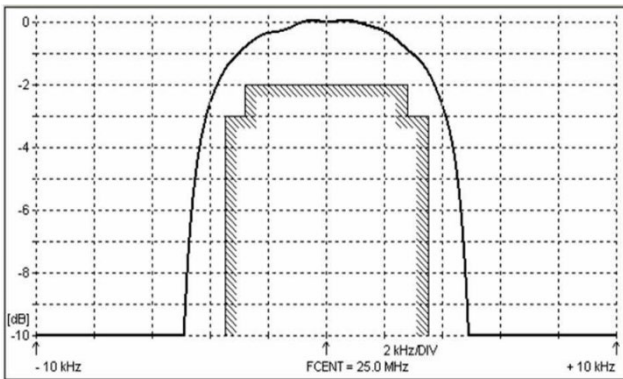
9.1



## 10.0 Frequency Characteristics

N°	Diagram 1	Diagram 2
----	-----------	-----------

10.1



## 11.0 Specification History

Revision	Change notes	Date
W1	Preliminary Datasheet creation	Feb, 20 <sup>th</sup> 2018
W2	Re-branding Rakon to RakonXpress	Jan, 22 <sup>th</sup> 2023